



TREASURE PELO
INDUSTRIES

COMPANY PROFILE & PROPOSAL

Treasure Pelo Industries (reg. no: 2013/030908/07), is level 1 BBBEE contributor founded in 2013 in South Africa.

jimmym@treasurepeloindustries.com 

+27(0)83 373 7346 

661 Christella Street, Moreleta Park, Pretoria 

www.treasurepeloindustries.com



TREASURE PELO
INDUSTRIES

TABLE OF CONTENT

Table of contents	1
About Us	2
Mission, Vision, Values & BEE	3
Business Approach	4
Services	5 - 6
Approach to projects	7
Goals	8
Integration with Client Organisation	9
Geographical Footprint	10
Completed projects	11 - 13
Policies	14 - 15
Team and Experience	16 - 18
Clients highlights	19 - 21
Giving back to communities	22 - 23
Achievements and Recognitions	24
Portfolio	25 - 26
Contact us	27

Treasure Pelo Holdings (reg no: 2013/030908/07), is a level 1 BBBEE contributor founded in 2013 in South Africa. The company offers professional Project Management services by employing the best minds in the industry for every project endeavour to ensure product, service and project success at all times.

Company Background



Treasure Pelo Industries is a **100% black owned** and controlled organization, which comprises of a consortium of a monopoly of experienced business that specializes in most fields in the industry. **Treasure Pelo Industries** has the commitment, skill and resources to meet the requirements of their customers and clients. We distinguish ourselves from the competitors by delivering prompt and accurate service to our customers in the most professional, efficient and reliable manner. We give our customers the assurance that we will be there when they need us.



about us

20+

Years of
EXPERIENCE

LEVEL

1
BBBEE

100%

Black
OWNED

ABOUT US

Treasure Pelo Industries with (reg no: 2013/030908/07), is a level 1 BBBEE contributor founded in 2013 in South Africa. The company offers professional services by employing the best minds in the industry for every project endeavour to ensure product, service and project success at all times.

Treasure Pelo Industries' Social Economic Development (SED) strategy is about empowering the communities in our project catchment areas with resources, support and skills that ultimately lead to better lives.

Since its establishment in 2013 Treasure Pelo Industries has developed into a specialised and respected provider of project management services and engineering services to various industries. Clientele includes some of South Africa's leading blue-chip organisations with work spanning across 2 countries. We have developed an established project management approach to accommodate and manage unique requirements for any project.

“

At Treasure Pelo Industries we value loyalty, quality, safety, Sustainability and professionalism at all times

”

MISSION, VISION, VALUES, BEE & APPROACH



MISSION STATEMENT

Our mission is to develop and implement solutions that are innovative, environmentally considerate and economically viable in a manner that will incorporate and fulfil the social needs of the communities our solutions will be serving.

To set new benchmarks of excellence with every project we undertake and to continually augment our capacity in order to exceed clients' expectations.

To deliver high-quality, cost-effective projects on time by employing and supporting motivated, flexible, qualified and focused professionals.

To become a preferred Business Partner of choice in industry through competent facilitation and delivery on TURNKEY projects such as EPCM type executed on any world-class standards such as NEC or FEDIC.

VISION STATEMENT

Treasure Pelo Industries is a professional, fully-accredited Project Management business. Our unique proposition is to work alongside you – across our broad spectrum of service offerings – to realise your vision on scope, on time and on budget.

We intend to be the best Project Management Company and preferred partner and associate of choice in any industries we operate in. To be a company with capability of incorporating infrastructure development with social development in order for solutions to be self-sustainable or sustained by the communities they serve for their benefit.

BEE

Treasure Pelo Industries is a "Black Economic Empowerment" company in terms of South African government's BBEE criteria and it is 100% owned by a black person and proud to be a Level 1 BEE Contributor in terms of the DTI's Codes of Good Practice. Treasure Pelo Industries is committed to promoting BEE across all levels of our organization.

OUR VALUES

Our company is committed to uphold integrity in the running of our business, providing the professional service to all our clients.

Give our people space to concentrate on high value-adding activities. Actionable solutions that deliver results. Cost containment through active expense management. Increase efficiency of processes. Customer satisfaction and Customer retention.



BUSINESS APPROACH

Treasure Pelo Industries businesses are supported by an integrated quality management system that underpins every aspect of its operations.

By strategically positioning quality management at the heart of its operations, Treasure Pelo Industries has bound together the full value chain of an infrastructure company, thus embedding the concept of a triple bottom line management culture, which is central to reinforcing sustainability and delivering a quality outcome to all stakeholders.

Quality management is the cornerstone of Treasure Pelo Industries operational culture and business approach.

The company has over-arching measures to consistently monitor performance and aims to empower employees to live its corporate values.

Black Economic Transformation:

Treasure Pelo Industries started its Broad-Based Black Economic Empowerment (BBBEE) journey in 2013 when it got founded by an experienced black engineer.

The organisation is currently a level one rated organisation and is one of the most empowered company in the sector in South Africa.

Employer of choice:

Treasure Pelo Industries strives to be the employer of choice in the industry and offers a compelling proposition to employees which includes:

- ✓ Experienced management and leadership.
- ✓ Continuous development through the organisation employees.
- ✓ Competitive remuneration and reward.
- ✓ Growth opportunities in the organisation.

Solutions

WE PROVIDE

"We are the best when it comes to Project Management, Project Management Office, Business Improvement, Best Practices, and Logistics"

Establishment of Project Management Office (PMO) from non-existence to maturity

Establishment and set up of Business Improvement office up to functional

Project Management, Project Planning (Scheduling) & Project Rescue to Align objectives and organisational strategy.

Setup of best practices office to functional and operational

Organisational Development & Logistics



TREASURE PELO
INDUSTRIES

SERVICES

PROJECT MANAGEMENT SERVICES

- Project Office design.
- Project implementation and operation.
- Project controls, reporting and admin services.
- Project guideline/manual development.
- Planning and scheduling.
- Contractors Management (NEC, FIDIC i.e)

QUANTITY SURVEYING

- Cost estimation.
- Re-measurement and certification.
- Project Benefit Establishment.
- Project Benefit Measurement and Realisation.

HEALTH, SAFETY & ENVIRONMENT

- Safety management.
- Safety Agent function.
- Environmental control.
- Management of project sites.

PROJECT GOVERNANCE, AUDITS & REVIEWS

- Establishment of project governance structures, principles and protocols.
- Establishment of project governance mandate, responsibilities, authorities and work method.
- Project audits covering all knowledge areas of project management.
- Conducting phase stage (gate) reviews.
- Conducting project risk reviews.
- Project plan reviews.
- Facilitate technical, HAZOP & financial reviews.

COST ENGINEERING & CONTROL

- Establish cost baseline.
- Cash flow management.
- Payment certification.
- Change control.
- Earned Value Management

ENGINEERING MANAGEMENT

- Instrumentation Engineering.
- Control Systems & Automation Engineering.
- Electrical Engineering.
- Civil (roads & structural) Engineering.
- Mechanical Engineering.
- Steel Fabrication
- Architectural Engineering.

LOGISTICS

- Transportation (Trucking – moving of commoditise and equipment.
- Licensed Supplier of oil and gas (Petroleum)
- Supplier of consumables.
- Establish quality parameters.
- Review and approval of Contractor Quality Control Plans.

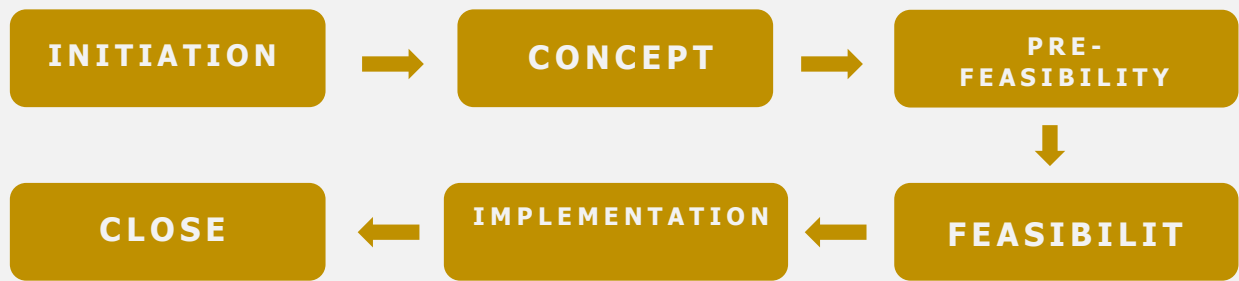
RISK MANAGEMENT

- Risk Assessment and analysis.
- Risk Response Strategy.
- Qualitative Risk Management.
- Quantitative Risk Management.

OUR APPROACH TO PROJECTS

We continuously aim to improve the delivery of projects through the incorporation of lessons learned and the application of robust systems and process.

- ✓ Maintain core team of resources.
- ✓ Structure project team around project and client needs.
- ✓ Supplement resources with selected skilled resources.
- ✓ Focus on Project, Engineering and Construction Project Management (supported by sound engineering experience and qualifications).
- ✓ Capital, OPEX, Cost Saving and Business Improvement.



While we maintain focus on the discipline of project management, our strong engineering profile adds significant value, as we assist in planning and interpretation of engineering solutions. We further collaborate with specialist design engineers and construction companies to provide EPC (turnkey) and EPCM (management) solutions to clients.





TREASURE PELO
INDUSTRIES

IT IS TREASURE PELO'S GOAL TO ACHIEVE THE FOLLOWING:

At Treasure Pelo Industries our aim is to provide project management services to our clients through our wide range of professional project management office services and qualified, professional resources.

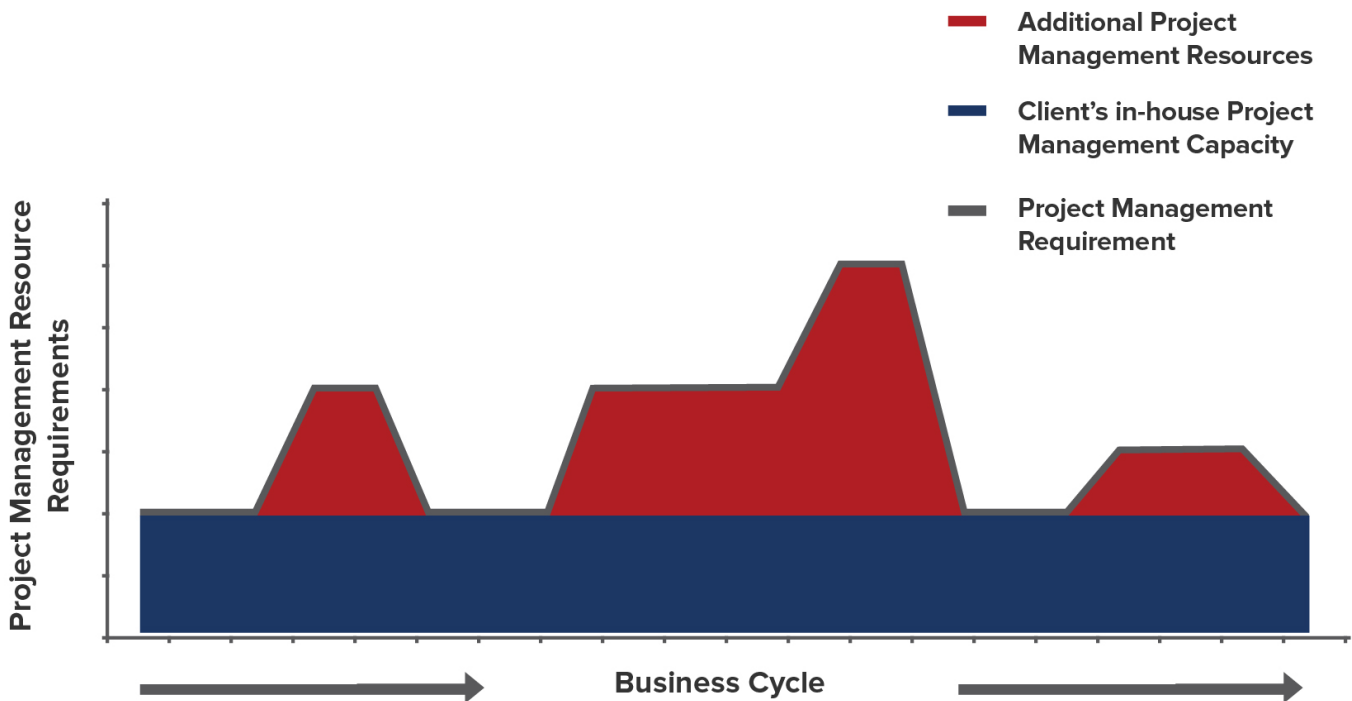
It is towards this aim that our founder has over the past 16 years, spent time in the professional project engineering and project management OEM, services and owner's team organisations, specialising in successful project delivery including consulting and professional resourcing.

- ✓ The correct scope is implemented to address the need and address the project objectives.
- ✓ The client pays a fair price for the implemented scope.
- ✓ The product is delivered within the best possible time period to optimise "time to market".
- ✓ The product meets the user requirement specification and the technical standards set by the professional team.
- ✓ A suitable integrated project team focusses on delivery of the product.
- ✓ Project risks are continuously identified, assessed and managed.
- ✓ The client and stakeholders are suitably informed of progress.
- ✓ Documentation is managed and stored.
- ✓ Goods and services are procured to meet time, cost and quality requirements.
- ✓ The above is integrated towards a successful project.

INTEGRATION WITH CLIENT ORGANISATION

Project management requirements vary between organisations and also within the same organisation over time. We have provided a project management service in a number of different circumstances.

A number of “non-projectised” organisations retain some project management capacity in-house. However, as projects are not core business (production and service delivery usually being the focus), the need for project management varies throughout the business cycle. Projects (usually required to enable and sustain production or for strategic reasons) occur at random and requires short to medium term increase in project management capacity. In organisations such as these, Treasure Pelo Industries provides project management to “smooth” out the peaks in project management capacity, as depicted in the figure below.



Start-up businesses may require the establishment of infrastructure or systems to enable the business to commence with operations. In such situations we develop feasibility studies and the required project plan to establish the infrastructure and/or systems. This is followed by the implementation of the project plan, which involves engineering, procurement, construction, commissioning and hand-over to operations.

Our project team structure is primarily determined by the client's in-house resources, which may in some cases be made available to the project. We consider an approach of “co-sourcing” to be the modern improvement to outsourcing and insourcing. This is an arrangement where resources and tools are made available to the project by the client.



GEOGRAPHICAL FOOTPRINT

Treasure Pelo Industries is an African company with a growing global footprint, ensuring that it understands and works within the parameters of local conditions, managing all risks effectively; thus giving clients peace of mind through quality delivery on time, whatever the challenges.

The organisation has the ability to swiftly redeploy resources between countries of operation to meet clients' requirements and to optimise all opportunities to suit stakeholder strategies.

The organisation has operated some of its projects in both South Africa and Zambia, we also have a focus on establishing a firm presence in the African continent.



TREASURE PELO
INDUSTRIES

COMPLETED PROJECTS



Kumba Iron Ore | South Africa | www.angloamerican.com

Lead the detailed planning on Technology projects at both Kolomela and Sishen mine. Project Audit and re-alignment of Technology portfolio of projects. Project controls development, monitoring and control on portfolio of projects.



Impala Mine | South Africa | www.implats.co.za

Facilitate the selection process of strategic business plan scenario and initiatives identified by the mine GM's (General Manager) for their different shafts. Lead the detailed planning process of selected Business improvement plan scenarios. Instil Project Management principles across departments and from top management to lower level stakeholders, Advisor to the CEO on Shafts status.



Konkola Copper Mine | Zambia | www.vedantaresources.com

Establish the Business Improvement Office (PMO). Facilitate the implementation of the Operational Management Analysis and Reporting System, once approved. Facilitate selection process for underground mining project and develop into executable projects. Facilitate the Project Selection process for improvement and cost savings projects...



Transnet R & D | South Africa | www.transnet.net

Manage all projects within Transnet Engineering R&D department (portfolio of 32 projects). Manage projects through PPM (Microsoft Portfolio Project Management) environment. Responsible for the department Capex budget (~ R 169 302 430.51) for the projects. Part of the Process Improvement team within the Transnet Engineering R&D department and Reporting to Head of Projects.



Rockwell Automation | South Africa | www.rockwellautomation.com

Manage subcontracts that include labour and/or fixed price deliverables. Responsible for meeting project schedule, margin, quality, and customer satisfaction targets. Build partnerships at the business management level of key customers. Help in leading efforts to prepare commercial strategy to complex system application and Full stakeholder management of all projects.



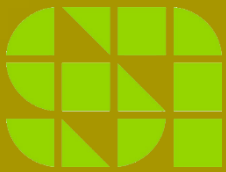
Aveng Manufacturing & Control Systems | South Africa | www.aveng.co.za

Maintain and improve relationships with key stakeholders. Attend to customer requirements within the defined scope of projects. Manage customer relations and expectations within the project, on a proactive basis. Generate monthly status reports with reference to commercial and finance indications. Understanding and utilisation of NEC contract parameters.



Schneider Electric | South Africa | www.se.com

Develop and design all technical aspects of the assigned projects. Implement projects by hands-on software configuration and system development. Maintain technical skills and knowledge in line with corporate direction. Responsible for quality of specifications, functional descriptions, and manuals. Contribute to improvement of engineering capabilities and processes by sharing knowledge.



Systems Anywhere | South Africa | www.systemsanywhere.com

Development of new and/or existing products as well as their implementation and execution. Interpretation of client's requirements, compiling specification documentation, manuals, SOP's. PLC, SCADA engineering with various software as per requirements. ArcestrA engineering.



Hatch Africa | South Africa | www.hatch.com

PLC / SCADA hardware design and software conceptualisation and configuration on BHP Billiton Heap Leach Column project in Chile. Commissioned 4.2MW ventilation fans for South Deep mine. (Fans controlled by Allen Bradley PLCs and RSview SCADA.) Commissioned Heap Leach Columns at BHP Billiton Randburg South Africa.



Adroit Technologies | South Africa | www.adroittech.co.za

System integration. System Audit, mitigation for improved system and design of Disaster Recovery Procedure. Write knowledge base for the SCADA. System Migration and MES engineering. Technical support to all adroit clients and integrity testing of the latest SCADA before release. Keep abreast of relevant and emerging technologies and Training & Coaching engineers on system design and engineering.



TREASURE PELO
INDUSTRIES

Our Policies



Safety, Health & Environmental Policy

Treasure Pelo Industries is committed to a clean, safe and healthy environment for our employees, contractors, customers and the communities around us.

All employees and contractors forming part of the Treasure Pelo Industries service, have a duty to prevent harm to themselves, to others and to the environment.

Treasure Pelo Industries will comply with all the applicable legislation, regulations and customers' requirements as minimum benchmark for its Safety, Health and Environment (SHE) Policy.

Treasure Pelo Industries will regularly review this policy, practices and performance to ensure ongoing improvements.

Quality Policy



Treasure Pelo Industries will make quality a way of life. Quality is the result of good management and will be achieved by the way we get the right things done.

We believe there is always a better way to provide services to our clients and strive for continuous improvement. In rendering our services we will optimise resource utilisation and commit ourselves fully to the task at hand. We consider meeting client requirements as the minimum performance criteria and aim to surpass expectations.



TREASURE PELO
INDUSTRIES



—
OUR

TEAM & EXPERIENCE

OUR TEAM & EXPERIENCE

Our team is flexible and able to adjust to clients' specific needs with respect to geography, internal processes and systems, as well as the availability of resources. The core team of project managers consists of graduate civil, mechanical, electrical, chemical and industrial engineers, with in-house Cost Management, Quality Control and Administration Support complementing our service delivery.

We have been involved in projects of repetitive nature and are in a position to package total solutions in a Turnkey format for similar projects. This includes the sealing of redundant mine shafts, security installations, box cut developments, underground mine access, fuel and lubrication storage facilities, legacy rehabilitation, ventilation shafts, conveyor systems etc.



Although it is preferable for formal project management to be included as early as possible in the life cycle of a project and remain included until closure, we have with success completed stand-alone activities and phases in project life-cycles, such as feasibility studies (mine development, facilities relocation, minerals extraction), implementation planning (establishment of a cellular telephone enterprise in the Middle East), risk assessments (mine development in Africa) etc. Some of our most successful ventures have arisen from being appointed to perform project status audits on "in trouble" projects and the subsequent appointment to get the projects back on track towards completion. Although this is not "the ideal" type of project, we pride ourselves in the fact that we have the skills and tenacity to get involved and ensure eventual success.

OUR CEO/ MANAGING DIRECTOR



Mr. Jimmy Mamoneke Makwela

Chief Executive Officer - CEO

Mr. Jimmy Mamoneke Makwela is the founding member of Treasure Pelo Industries, and one of the executive directors of the company. He is an experienced Project Manager and Control Systems Engineer with over 20 years of experience in industries such as Process Automation, Mining, Oil & Gas and Rail (R&D).

He graduated from Tshwane University of Technology in Electrical Engineering and from The University of Cape Town in Business Project Management.

He is presently a Value Lead for Performance Design. He has extensive experience in infrastructural projects in Mining and Building construction. In addition to his general corporate experience, his vast and rich experience, consistent with organisation strategy will provide operational excellence to the SR Construction and a capability to drive innovation.

As an engineer, he has fulfilled various roles and functions such as Senior Technical Support Engineer; Project Engineer; Software Automation Engineer and Lead Projects & Commissioning Engineer.

He strategically progressed into a Project Management role as a stepping stone towards management and leadership position at C-suite.

As a Project Manager, he has a proven track record of successfully completed projects, executing and leading multiple projects in a program, some of which are NEC and FIDIC based type of contracts, based on PMI's PMBOK guide, techniques, tools and processes.

He spent the early years of his career specializing in SCADA Engineering; as a result, became an expert in the Adroit SCADA system and was the first person to be certified as an Adroit SCADA engineer globally. He then moved to Hatch where he gained a lot of international experience in plant commissioning; systems automation and plant operational support from countries like DRC; Chile; Madagascar. He then joined Systems Anywhere where he was commissioning at Great Basin Gold mine, after that project, he joined Schneider Electric where he was lead engineer on several projects including the SKA (Square Kilometre Array) project in the Northern Cape and the Cut 8 project in Debswana Jwaneng Botswana.

As a Project Manager he developed strong competences in agility during project execution to align strategic project management values to organizational strategy, project leadership, project management hard and soft skills, conflict resolution, risk management, contract negotiation, and management before and during project lifecycle, stakeholder engagement, and management at all levels, management of EPC and EPCM projects, management of Budget, cost control and earned value management, best practices in planning and scheduling using MSP & Primavera software.

Names:

Mr. Jimmy Mamoneke Makwela

Experience:

20+ Years of Experience

Education:

Electrical Engineering (Tshwane University of Technology) and Business Project Management (University of Cape Town)



TREASURE PELO
INDUSTRIES



Clients

Highlights



Anglo Fire & Gas Detection system

EPCM



Total Waltloo Fire & Gas Upgrade

EPCM



Total Alrode Fire & Gas Detection upgrade

EPCM



DMR Sasol Steam Station DCS Migration & expansion

EPCM



Sasol Wax6 DCS Phase 2 Expansion

EPCM



Sasol Wax5 DCS Phase 2 Expansion

EPCM



**Sasol Wax6 DCS Phase 2
Expansion**

EPCM



SI Group Batch system

EPCM



**Husab JV Process Control
System (Namibia)**

EPCM



**Swakop Spare Panels supply
(Namibia)**

EPCM



Transnet R&D projects

Best Practice & Business
Improvement



KCM Program Management

PMO & Business Improvement



**Impala Platinum Program
Management**

Business Improvement



Kumba Iron Ore

Technology Projects

BEYOND PROJECT MANAGEMENT BUSINESS

Our Commitment to communities:

Our mission and vision, reinforces our commitment to create meaningful tangible and enduring value for our clients and partners in the communities where we operate and for our country. Our brand character is permeated by our strong passion to build. Building in this context is not limited to what we do as a project management business, but extends to contributing to building individual dreams, communities and countries at which we operate in. Our Citizenship story reflects the main building blocks of the impact of our work beyond management: contributing to build individual dreams, communities and the world as whole.

Citizenship commitments and pillars:

Impact on individuals:

We are committed to the development of skills among previously disadvantaged individuals by offering training and internship programs.

Impact on the communities:

We are committed to address the unemployment problem by creating job opportunities for people in the communities in which we operate.

Impact on our country:

We contribute to the socio economic development of the country by delivering quality projects within key infrastructure commitments that shape and make a difference in communities, across education, healthcare and transport.

SUSTAINABILITY

TREASURE PELO INDUSTRIES IN SOCIO - ECONOMIC DEVELOPMENT—"BUILDING COMMUNITIES, BUILDING OUR FUTURE"

Treasure Pelo Industries Social Economic Development (SED) strategy is about empowering the communities in our project catchment areas with resources, support and skills that ultimately lead to better lives.

Treasure Pelo Industries aims to spend 1% of its net profit after tax (NPAT) on community projects and non-profit organisations. The group's SED programme has three key focus areas:

Education & Training

With particular focus on maths, science, environmental science and technology education.

Social Development

Investing in community development programmes, HIV/Aids awareness and other emergency-related initiatives such as disaster relief and ad hoc sponsorship.

Economic Development

With particular emphasis on promoting the sustainable creation of employment, particularly for marginalised and unskilled groups such as women and youth.



TREASURE PELO
INDUSTRIES

Empowering Communities and Giving Back.



ACHIEVEMENTS & RECOGNITIONS

Aveng Manufacturing ACS Award Sasol Technologies | 2015

Mr Jimmy Makwela was the Project Manager for the "DMR Sasol Steam Station DCS Migration & expansion project" that won Project of the year at Sasol Technology group in 2015.

Best Team Player Hatch Africa | 2009

One of our Director Mr Jimmy Makwela was nominated by colleagues for the role he played in knowledge sharing, mentoring and coaching of fellow engineers on one of the projects we did for Hatch Africa.

Best Team Hatch Africa | 2008

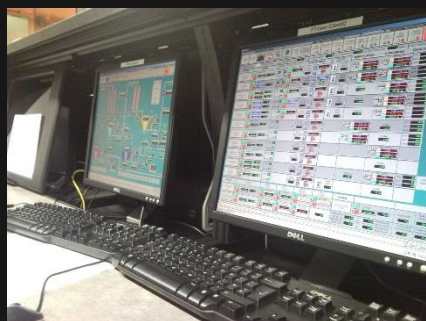
We were part of a team that re-build the Anglo platinum Polokwane Smelter in a record time of 5 weeks after an explosion on site.

Adroit Certified Engineer Adroit Technologies | 2006

Our Director was the first candidate globally to qualify as an adroit certified engineer.

OUR PORTFOLIO







TREASURE PELO
INDUSTRIES

CONTACT US

TREASURE PELO INDUSTRIES



Address:

661 Christella Street,
Moreleta Park, Pretoria East



Email:

jimmym@treasurepeloidustries.com



Phone:

+27 83 373 7346



Website:

www.treasurepeloidustries.com



TREASURE PELO
INDUSTRIES

Thank you

We would be delighted to have an opportunity to meet up with you personally to discuss how we can take your organisation forward. Feel free to contact us for an innovative solution to your project challenge. We appreciate your time and consideration.

ADDRESS

661 Christella Street, Moreleta Park,
Pretoria East, South Africa

CONTACT

+27(0)83 373 7346

EMAIL

jimmym@treasurepeloindustries.com



TREASURE PELO
INDUSTRIES

www.treasurepeloindustries.com



TREASURE PELO
INDUSTRIES

THE END

www.treasurepelindustries.com



TREASURE PELO
INDUSTRIES